

# TECHNICAL RIDER ROCKABY



## Summary of the practical information

- Performance: music-theatre
- Title: *Wiegeling - Rockaby*
- Audience: children in the age of 6-18 months and their (grand-)parents
- Duration: 30 minutes, with 15 minutes 'afterparty'
- Time between performances: 45 minutes
- Number of players: 3
- Number of technicians: 1
- Audience capacity: maximum of 60 people
- Maximum number of performances on one day: 3
- Number of venues on one day: 1
- Time of arrival: 3 hours before the start of the performance
- Clearing the stage: 1,5 hours
- Means of transportation: 1 van and public transport
- Contact: Rudi van Hest, +31 6 24642470, rudi@frisseoren.nl

## Technical requirements

- Venue, minimum measurements: 10 x 8 meters
- Playing surface, maximum measures: 3,5 x 5,1 m (excluding audience)
- Stage: black box theatre with audience on stage, or any venue that is suitable
- Floor: ballet-floor or wooden floor, splinter free
- Masking: closed, if available
- Fly cue: no fly cues during the performance

## The venue provides

- A clean floor, vacuumed and mopped
- Help with unloading and loading the van
- Help with the lighting plan, especially lighting on the audience

## Sound

- Sound: everything is played acoustically, no amplification required

## Installation / décor (see attachment)

- The installation consists of an aluminum frame on 4 baseplates. From this frame, 11 balls (blobs) in fabric or tulle hang down and can be pulled up or let down by the performers. On top or within these balls there are lighting techniques installed.
- On the floor there are soft carpets.
- On the floor there is a round, wooden stage element, covered with soft cloth, with a lighting technique installed within the element.
- Around the installation, there are seating benches, pillows and round carpets for the audience to sit on. The company will bring these along.

## Seating of the audience

- The company will bring their custom made seatings (wooden benches, carpets and pillows).

## Technology

### Power

Within reasonable distance, two separate, clean groups of electricity, 16 Ampere - 230 Volt (edge grounded)

Group 1: Controls (MacMini + accessories, router)

Group 2: Lighting

There are 11 'blobs hanging in the installation, divided in interactive and non-interactive elements. There are 6 interactive and 5 non-interactive 'blobs'.

- Non-interactive. In the bucket above the 'blob' there is a LED-ring, consisting of 60 RGB LED's. Next to the bucket, there is an installation-box that controls the lighting in the bucket.
- Interactive. In the bucket above the 'blob' there is a LED-ring, consisting of 60 RGB LED's. On top of the ball inside the 'blob' there are two LED-rings (each consisting of 24 LED's) and a gyroscope sensor. Next to the bucket, there is an installation-box that controls the lighting in the bucket and controls the sensor.

#### *Wooden stage element*

Underneath the wooden stage element there is a removable wooden plate, with an LED-ring attached to it, a micro-controller and a 20.000 mAh power bank. This provides a light underneath the element without having to connect it to cables. The power bank needs to be charged before each day of performing. Battery status can be checked on the power bank, with the button on the side. This button also provides a solution if the light doesn't switch off by itself.

#### *Installation-box*

Each installation-box consists of power supply for the LED-rings, the sensors and the microcontrollers. The cables for powering these boxes are fitted with Powercon True1 connectors. All 11 boxes are interconnected with these cables. The total wattage of these boxes: 1.200 Watts, the typical wattage is 300 Watts. Because of the inrush current, it is recommended to switch on the boxes in 2 groups, if there are more devices hooked up to the electricity group or if the automat switches on.

On the installation-box, there is a RJ45 connector for the sensor and the LED-rings in the 'blob'. There is voltage running through it, so do not hook up any other devices than the ones hanging in the installation. Next to it there is a GX12-3 connector on the installation-box for the LED-ring in the top of the bucket. Do not connect other devices to this connector also. Nothing has to be disconnected for transport.

The microcontroller in the installation-box communicates through WiFi with the software on the mediaserver. Communication for the sensors runs through OSC and for the LED's through Art-Net. The microcontroller sends and receives data to control the LED-rings. All processing of the sensor data happens within the mediaserver as to create the possibility to determine the sensitivity and effect of the sensors 'on the fly'. It is also possible to program multiple scenes/programmes with its own effects.

Each installation-box has its own unique IP-address which corresponds with the number of the 'blob'.

#### *Mediaserver*

A MacMini runs TouchDesigner with a custom patch that controls all data. An accesspoint/router provides the connection between the installation-boxes and the mediaserver. The accesspoint has to be connected to the mediaserver through a network cable. Connect this cable to the network gateway on the Macmini and network gateway called 'LAN1' on the router

#### *LED fixtures*

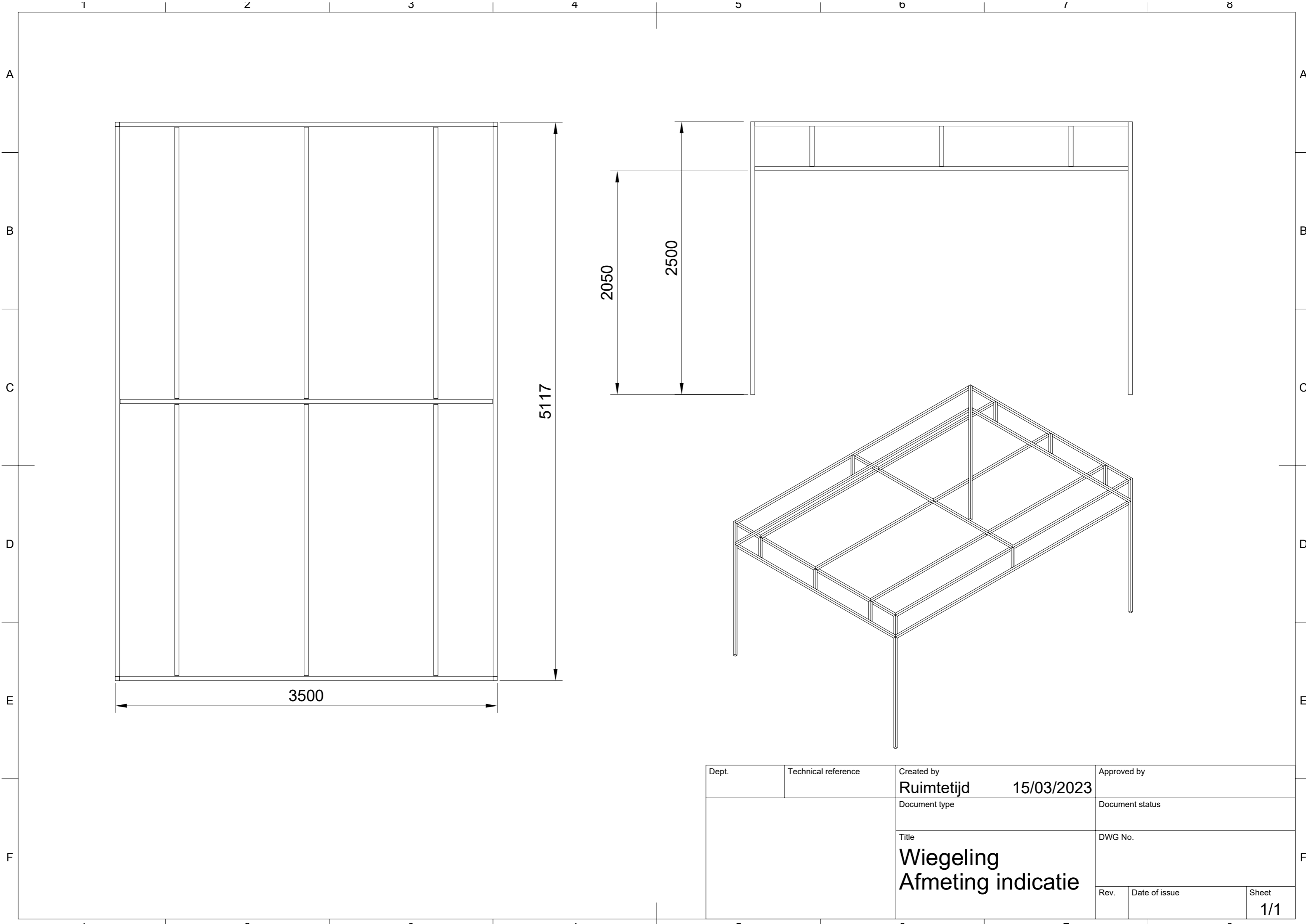
On the aluminum frame, there are 4 ADJ Saber LED lighting fixtures hanging (4x 15W = 60W max)

**Rockaby is a production of:**

Frisse Oren  
Balistraat 74  
3531 PZ Utrecht

t. +31 6 24642470  
e. [rudi@frisseoren.nl](mailto:rudi@frisseoren.nl)  
w. [www.frisseoren.nl](http://www.frisseoren.nl)





Dept.	Technical reference	Created by <b>Ruimtetijd</b>	15/03/2023	Approved by
		Document type	Document status	
		Title <b>Wiegeling Afmeting indicatie</b>	DWG No.	
		Rev.	Date of issue	Sheet <b>1/1</b>